

Northwest Gaited Horse Club

Winter Newsletter - 2006

GET OUT THERE AND RIDE!

The Northwest Gaited Horse Club's Trail Ride Program gives riders good incentive to saddle up. The program rewards you for the hours you spend in the saddle. Riders explore parks, evergreen forests, beautiful beaches and some of the northwest's most scenic public lands. The NGHC presents awards at the end of the year to the rider having the most logged trail hours. The 2005 winners are Anthony Wilson and Nicky Bachman. Anthony logged 134 hours on 3 different horses; 106, 23, and 5 hours respectively. Nicky logged 77.5 hours to earn the second place award.

You can log hours and earn awards by attending NGHC trail rides or going on your own trail rides. All gaited horse enthusiasts are welcome to participate; however, you must be an NGHC club member to receive the awards. Riders must submit logs that show hours ridden by December 31 of the current year to qualify. In January of the next year, awards for most hours ridden will be presented. A Trail Ride Log Sheet is available to download from the Club's website: www.nwgaitedhorse.com. A tip sheet is also available to help you plan your rides.

The 2006 Highest Logged Trail Hours Award package retails for \$150. The award includes:

- ★ A Port Authority All-Season Jacket - The jacket is embroidered with the Club logo and is waterproof with a soft micro fleece lining and a stylish contrast sleeve design in black and gray.
- ★ A Field and Stream Adventure Set - Full tang half-serrated hunting knife with a wrist strap and sheath, rubber handle lockback folding knife, full tang ax with wrist strap, stainless steel multi-tool with sheath, outdoor carabiner with LED light and compass, and a blow molded hard storage case.

Second Highest Logged Trail Hours Award package retails for \$87 and includes:

- ★ A polo shirt and baseball cap embroidered with the club logo.
- ★ A pair of Binolux Roof Prism Compact Binoculars with coated optics 8x21, and rubber armor. This binoculars fit in the palm of your hand.

TRAIL COMMITTEE MEMBERS WANTED

We are currently looking for volunteers to form a Trail Committee. The Trail Committee duties are:

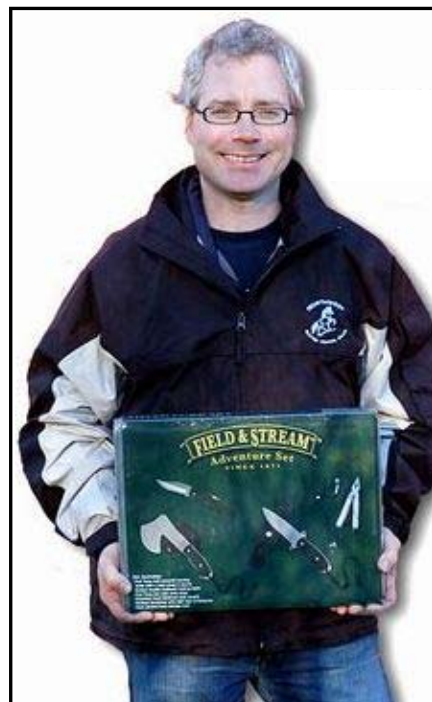
- ★ Select, review, and rate locations for trail rides
- ★ Schedule dates and times for trail rides
- ★ Tabulate hours ridden by club members at end of year, using an hourly log, and award members with the most hours ridden for the current year.
- ★ Ensure information regarding trail rides is disseminated to the Club membership in a timely manner.

There has been much discussion about Competitive Trail Riding (CTR) and Endurance Riding on the NGHC's online e-group. Many club members have expressed an interest in learning more and in participating in CTR. Both CTR and endurance are well-suited to gaited horses. Those interested in CTR are encouraged to come to the Club meeting on Friday, February 24th to discuss the possibility of putting together a team to organize and/or support a CTR event.

ANNUAL CLUB MEETING

The NGHC's first club meeting of 2006 will take place Friday, February 24th at Amante Pizza & Pasta in Renton. (Please see page 2 for complete directions.) The meeting will include a pres-

(Continued on page 3)



Patrick Stuckey displays the prizes in store for the 2006 Winner of the Highest Logged Trail Hours award. How about this nifty Club jacket and Field and Stream Adventure Kit! All this for doing what you love!



Inside this Issue:

- **NGHC Club Meeting - Pg. 2**
Join us for our first 2006 meeting!
- **Danger in Your Pasture - Pg. 4**
Plants that can kill your horse
- **NGHC Stallions - Pgs. 6, 7 & 8**
Handsome choices for your mare!
- **Breyer Horse Parade - Pg. 10**
A Fun Event for All!
- **Donida Schooling Shows - Pg. 11**
Pictures from the latest show
- **Events Calendar - Pg. 12**
Upcoming Rides, Shows & Clinics

Date: Friday, February 24, 2006

Time: 7:00 pm

Club Meeting

Please come join us!

Topics will include:

- ◆ Award presentation to members with the most logged trail riding hours in 2005.
- ◆ Learn what is happening in the club.
- ◆ Share your ideas.
- ◆ Meet your fellow club members!

Do you have any photos of you and your horse that you would like to share with us? Any fun camping or trail riding pictures with your horse? If so, we would love to include more pictures of our membership on the club website and newsletter. Please bring them with you to the meeting.

We look forward to seeing you!

(Please arrive by 6 pm to order food)

Where: Amante Pizza and Pasta
(in the banquet room)
4201 Sunset Blvd. NE
Renton, WA
(425) 271-8985

Directions from the south:

Head northbound on 405 into Renton. Take exit 5 and turn right onto NE Park Drive/WA 900 (turns into Sunset Blvd). Go 1.9 miles and it is on the right just past Union Avenue.

Directions from the North:

Head southbound on 405 toward Renton. Take exit 5 and turn left onto NE Park Drive/WA 900 (turns into Sunset Blvd). Go 1.9 miles and it is on the right just past Union Avenue.



Northwest Gaited Horse Club

Phone: (425) 241-7786

Email: info@nwgaitedhorse.com

Web: www.nwgaitedhorse.com

Get Out There & Ride!

(Continued from page 1)

entation by Heather Carder of Noble Saddlery. Heather is a representative for Stubben saddles. Heather's presentation will focus on saddle fitting for gaited horses. The Stubben saddle line includes a gaited show saddle, gaited pleasure saddle, Icelandic saddles, and endurance saddles. She will have gaited horse saddles with her and will have handouts about saddle fitting available.

Meeting Agenda:

- ★ Introductions
- ★ Stubben Presentation by Heather Carder
- ★ 2005 Trail Program Award Status
- ★ 2006 Trail Program Awards
- ★ Club Member Input for Upcoming Clinics
- ★ Trail Committee
- ★ Competitive Trail Ride Discussion
- ★ Evergreen Gaited Horse Classic Show Status
- ★ Volunteer Interest
- ★ Round Table Discussion/Photos/Stories to Share

CLUB OFFICER ELECTIONS

Elections for Club officers will be held in June. If you are interested in being an officer and helping to guide the direction of the club, please e-mail your nomination to info@nwgaitedhorse.com to have your name included on the ballot. Officer positions include: President, Vice-President, Secretary, and Treasurer. *Candidates must be a current club member.*

The NGHC has members in eastern Washington, Oregon, northern California and Canada. The club welcomes anyone who would like to be a **Regional Representative** to help promote gaited horse activities in these areas. Please contact the Club for more information about becoming a Regional Representative.



NGHC MEMBER BENEFITS

Why should you join (or rejoin) the Northwest Gaited Horse Club? This club is for people who love gaited horses, want to learn more about them, have fun, and meet other people who feel the same. The NGHC works hard to promote, support, educate and provide activities for naturally gaited horses in the Pacific Northwest.

The NGHC is unique in the Northwest. The Club has a user-friendly, professionally designed **Website**. Members can post classified ads to buy or sell horses, tack, or horse-related services. The classifieds are easy to use. Just click on "classified ads", click "register" and fill in the form.

The club provides great membership benefits that including the **Club's on-line e-group**. The e-group is a great way to get to know other club members, to share information about trail rides and horses or to ask questions about horse health, or just share horse-related experiences. Messages are sent by email either individually or in digest form. For members who have limited inbox capacity the messages can also be viewed on the Yahoo Groups web site. It's easy to join the e-group. Just use the link on the **Membership** page of the club's website.

NGHC members also receive special **discounts on goods and services** from our club sponsors. These discounts provide great savings on tack, stable & barn supplies, feed, gifts and horse related services. You can find sponsors and details on the **Member Discounts** page on the Club website.

Another member benefit is the club's **Quarterly Newsletter**. The newsletter contains information on upcoming clinics, shows, and events, breed and member profiles, informational articles and photos. Members receive the newsletter in Acrobat PDF format via email or can

download it from the club website. For those that don't have email the newsletter is printed and mailed. We also distribute copies of our newsletter at club events and email to our club sponsors.

There are many ways to learn and grow with the Northwest Gaited Horse Club. Volunteer opportunities are available with the Trail Ride Committee, the Versatility Program, Youth Program, and The Evergreen Gaited Horse Classic Show. This year's show is in the planning stages. For those who'd like to check out what showing is all about, volunteering is a great way to get up close to the action and "get your feet wet".

A membership in the NGHC is one of the best things you can do for yourself and your gaited horses! Membership is only \$30 a year! Don't miss out, download a membership application from www.nwgaitedhorse.com and join today!

God first made
Man. He thought
better of it and made
Woman. When he
got time He made
the Horse, which has
the courage and
spirit of Man and
the beauty and
grace of Woman.

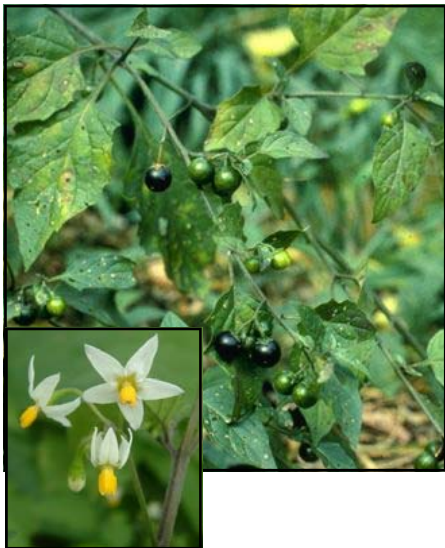
- BRAZILIAN SAYING

Danger in Your Pasture

Contributed by Kathy Johnson



This is part 3 in a series of articles about plants common to the Northwest that contain toxins and can be deadly to your horses. This article includes symptoms of poisoning typical of the plant described and treatment, if any is available. Remember, most horses will not eat things that are not good for them if they have something else to eat instead.



Dainty Black Nightshade flowers (inset) belie the plant's dark history. Nightshade is synonymous with death, the underworld and mediaeval potions.



Red Maple (above & below) is incredibly deadly to horses. Nearly all horses who eat Red Maple leaves die as a result of the tree's as yet unknown toxin.



Black Nightshade (*solanum nigrum*)

The species *solanum* consists of about 1,500 common plants and includes potatoes and eggplant. The tomato is a related plant. Black Nightshade is said to be sacred to the Greek goddess Hekate, holder of the keys to the Underworld. Black nightshade is often involved in lunar magic or works related to death and is believed to be one of the main ingredients of the hallucinogenic brews of mediaeval Europe. Black nightshade is an annual that can grow up to 3 feet tall. The nightshade has small white star-shaped flowers with an upright yellow stamen. The flowers are followed by smooth, round green berries that turn purplish black as they ripen. All parts of the nightshade plant are toxic, the unripe berries are the most toxic. Even though Nightshade is toxic it rarely causes death because the plant usually tastes bad to horses and they won't eat enough of it to cause a serious case of poisoning. The major toxin is solanine that affects the gastrointestinal tract and central nervous system. Symptoms of ingestion are poor appetite, nausea, salivation, abdominal pain, and diarrhea (with or without blood). Nervous system signs include depression, difficulty breathing, incoordination, progressive weakness/paralysis, collapse, convulsions and unconsciousness.

Red Maple (*Acer rubrum*) is a medium-sized tree with 3 to 5 lobed leaves. The leaves are green with a silvery white underside and turn red in the fall. The leaves are the most toxic part of the tree especially if they are fallen, damaged or wilted. Wilted or dry leaves can remain toxic for nearly a month. Horses are the only animals affected by the toxin, which has yet to be identified. Eating wilted or fallen leaves causes destruction of the red blood cells and makes them unable to carry oxygen to the horse's body. Horses should not be put into pastures where red maples are present as the leaves are palatable and horses will eat them. Clinical signs of

red maple poisoning develop within one or two days and can include depression, lethargy, increased rate and depth of breathing, increased heart rate, jaundice, dark brown urine, coma, and death. **There is no antidote for red maple poisoning**; treatment can include mineral oil and activated charcoal to prevent further absorption in the stomach, oxygen, fluid support, and blood transfusions. *Approximately 50% to 75% of horses affected by Red Maple poisoning either die or must be euthanized.* There are no documented cases of poisoning from other species of maple but caution is always best. Be careful about putting horses into pastures with sugar maples or silver maple.

Tansy Ragwort, like Foxglove, is a biennial plant that lives for two years. Tansy ragwort usually germinates in fall or early winter. The plant produces a rosette of ruffled leaves during the first year, produces flowers and seeds the second year, then dies. Most ragworts grow along roadsides, in pastures, and in wet or waste areas. It is common to see stands of Tansy spring up in areas where the ground has been disturbed like those around construction sites or clearcuts. Tansy Ragwort has a very strong odor that clings to your hands or gloves.

Tansy is invasive, aggressive and a champion at survival. It is very hard to eradicate. The crown and root system of a flowering plant can produce new rosettes. If the flowering stalk is cut, mowed, trampled or injured the plant will behave as a perennial and keep coming back. The plant can resprout from crown buds, intact roots or even root fragments! If flowers are cut off prior to seed set, the plant can reflower later in the same season. Tansy can produce 5,000-200,000 seeds per plant! The seeds have a feathery pappus (like a dandelion) and are easily carried by the wind. Seeds can lay dormant in the soil for 10-16 years!

(Continued on page 10)

*The Northwest Gaited Horse Club thanks our Many Fine Sponsors!
Be sure to thank them with your business!*

OUR PLATINUM SPONSORS

**Your Business Card
could be here!**



Contact the Northwest Gaited Horse Club for Sponsorship Opportunities!

TRAILERS NW INC

MIRAGE SILVERLITE LOGAN THURO-BILT C & B ABU IRON EAGLE

FULL SERVICE REPAIRS HITCHES & WIRING

BRANDON
(425) 413-5956

HORSE STOCK LIVING QTRS. CARGOS DUMPS TILTS FLATBEDS CAR HAULERS

18421 Renton/Maple Valley Hwy SE • Maple Valley, WA 98038

A full selection of horse and stock trailers, car haulers, and flatbeds in all the major brands.

VR SALES
Now Offering
SilverLite

Silver Lite Trailers, Inc.
1291 South A Street
Springfield, OR 97477
541-744-1215

www.silverlite.com
"The Affordable Aluminum Trailer"

Need a better trailer?
Think about a Silver Lite!

NGHC Gold Sponsors

REBER RANCH
28606 132nd Ave SE
Kent, WA 98042
(253) 630-3330
www.reberranch.com

The Northwest Gaited Horse Club's Grand Sponsorship for the Evergreen Gaited Horse Classic Show is still available!

Our **Grand Sponsor** receives **exclusive** promotional opportunities not available to any other sponsor. The Grand Sponsor's name and/or logo will appear on the exhibitor numbers on every rider in the show, in the show premium, in the quarterly newsletter, on the Club's professionally designed web site, and at club events (includes promoting sales and ads you have throughout the year!)

Please contact the Northwest Gaited Horse Club to learn about this wonderful opportunity to promote **your** business! Call (425) 241-7786 or info@nwgaitedhorse.com.

NGHC Club Sponsors

Dr. Dale Pierson, D.C., C.A.C.
Balanced Equine Chiropractic
P.O. Box 504
Burley, WA 98322
(253) 312-7905

Running Horse Cards
23419 SE 217th Place
Maple Valley, WA 98038
(425) 413-1090
paseocaballo@yahoo.com

Noble Horse Saddlery
Heather Carder
2326 N Happy Valley Road
Oak Harbor, WA 98277
(360) 679-3474 (360) 929-6589 cell

Pawsitive Motion
Lisa L. Piccioni, DVM
Certified in Animal Chiropractic by the AVCA
Creswell, OR
(541) 915-9988

K&S Saddlery
228 162nd St, So.
Spanaway, WA 98387
(253) 537-1275
www.kssaddlery.com

Joseph Freeman, C.S.I.
Equine Fascial Rebalancing
20309 NE 242nd Ave, Battle Ground, WA
98604 (360) 687-8384
www.josephfreeman.com

King Feed
23417 SE 436th Street
Enunclaw, WA
(360) 825-6554 or (877) 727-6554
www.kingfeed.com

Northwest Equestrian Solutions, LLC
17828 NE 185th Street
Woodinville, WA 98072
sales1@equestriansolutions.com

★
★ *What's in a Website?* ★
★ Plenty - if it's www.nwgaitedhorse.com ★
★ *The club's website is the very best way to get the most current information on* ★
★ *club news and upcoming events. The website has membership applications, show* ★
★ *premiums and entry forms for the Evergreen Gaited Horse Classic and **FREE*** ★
★ *classified ads for NGHC members! Check it out often!* ★
★

THE STALLIONS OF THE NGHC

The Northwest Gaited Horse Club is "Home" to some of the finest naturally gaited stallions in the country. If this is the year for your mare to produce that special foal, look no further.

All pictures and information in this section has been provided by the Stallion owners. Please contact the owners at the numbers and emails listed if you have questions, need more information or to make breeding arrangements.



La Bamba Chance

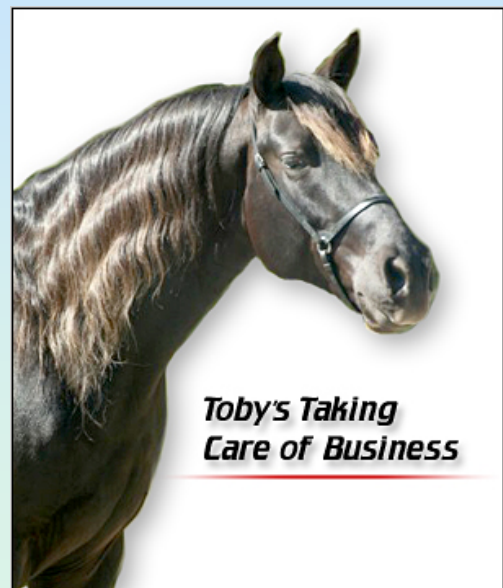
La Bamba Chance is a tri-colored Paso Fino who has sired 19 foals. When bred to solid colored mares 50% of the babies are colored. When bred to non-gaited mares 50% of the babies are gaited. He is a heavy boned horse who is extremely strong. He passes this great bone on to his babies. Most of all it is his disposition which is truly outstanding - what a quiet easy going gent he is. His babies are all the same, so easy to train and quiet and sensible on the trail. We do hand or pasture breeding only and offer free mare care during the summer months to your well-mannered mare. Stud fee is \$500 ffg. Standing at Irisgoe Farm, Cle Elum, WA
Contact: Frances Ceraolo, (509) 674-3851
www.irisgoefarms.com

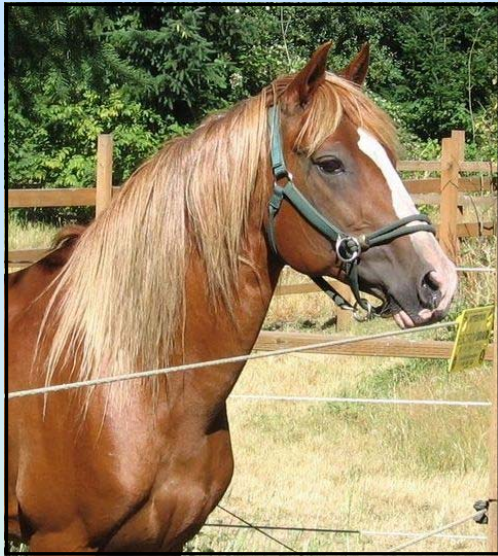
Toby's Taking Care of Business

Toby's Taking Care of Business is a double registered Rocky Mountain Horse, Kentucky Mountain Saddle Horse stallion and was "2002 Best of Show Grand Champion". His breeding fee is \$650.

- 15.1H
- Rare CLEAR EYED (aa)
- Dark chocolate with mixed flaxen mane and tail
- Choco Dock and Johnson's Toby line
- Strong gait to pass on to your foal
- Toby's temperament is second to none!

Brighton Ridge Farm, Renton WA
(425) 226-6943
www.brightonridge.com





HSR Cimarron

HSR Cimarron is an 11-year old chestnut Peruvian stallion with flaxen mane and tail. He is a high energy horse with wonderful gait. Cimarron is a grandson of two legendary Peruvian stallions, AEV Regional and *Mantequilla. He passes his intelligence, beautiful correct shoulder angles, high headset, fine skin and coat, and rich color to his foals.

Cimarron is available to approved mares only, stud fee by private treaty. Please contact Kathy Johnson at Viking Ridge Ranch, Longbranch, WA.

Phone: (253) 884-6926.

Email: VikingRidg@msn.com

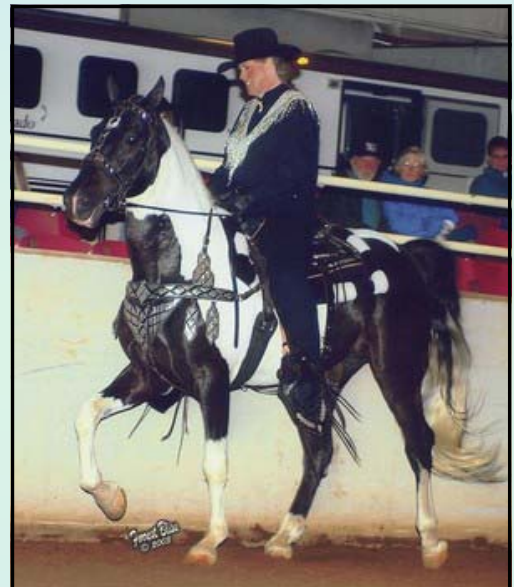
Carbon's War Eagle

Carbon's War Eagle is a 16.1 black and white Tobiano, registered TWH, SSH, SMH. He walks and racks. He has an unbeatable disposition. He is very talented and participates in horse dancing using advanced dressage moves. He has been camping, trail, road, and ridden in many parades. He has been elk hunting and is solid enough to shoot from his back. He has won many championship classes under both english and western. Cooled and frozen semen is available with a live foal guarantee. He has produced 9 out of 12 spotted foals. Fee: private treaty.

Standing at Mountain Valley Farm, LLC, Scio, OR.

Further info upon request. Contact Jeff and Doreen Hunter.

(503) 394-2716 and fax (503) 394-2579.



Grace Acre's Jericho

Grace Acre's Jericho is a true black, triple registered, Rocky Mountain stallion with an exceptionally smooth 4-beat gait that he passes onto his foals. He has no white socks or facial markings. Jericho is 14.3 hands tall and is a former RMHA International Futurity Champion and UMHA Trail Pleasure Reserve World Champion.

Jericho will be available this spring and summer for limited, natural, breeding. He stands at Northwest Mountain Horses' farm, in Spanaway, Washington. His breeding fee is \$500, with a live foal guarantee. The nonrefundable booking fee is \$100.

You can see Jericho's papers, see more of his photos and learn more about our farm at www.nwmountainhorses.com.

E-mail: information@nwmountainhorses.com

Phone: (253) 875-5488.

THE STALLIONS OF THE NGHC



Longview's Shaman Tonka

Longview's Shaman Tonka is a maximum white Sabinos, 15.3h Tennessee Walking Horse with a beautiful natural gait. He is futurity nominated. He has been shown in halter and model stallion classes winning championships in both categories. We offer one of his fillies, chestnut roan with flaxen mane and tail, for sale at this time. We offer both cooled and frozen semen with a live foal guarantee. He may be viewed at Mountain Valley Farm. Further information is available upon request. Must see to appreciate. Fee Private Treaty.

Standing at Mountain Valley Farm, LLC, Scio, OR. Further info upon request. Contact Jeff and Doreen Hunter.

(503) 394-2716 and fax (503) 394-2579.

Leikari

Leikari is a purebred 4 year old Icelandic stallion registered with the USIHC. He is out of first and honor prize bloodlines. He has not been evaluated yet, due to his young age, but will be next year.

He has had 3 offspring, 2 fillies and a colt. One filly is blue dun, one is a chestnut and white pinto and the colt is a red dun pinto.

Leikari will be performing in the stallion parade at the Greater NW Horse expo in Albany, Oregon on March 17-19, 2006. He is standing at stud for purebred Icelandic mares, and the stud fee is \$600.

He can be visited at our ranch, M and M Stables 10315 Old Hwy 99 SE, Olympia, WA 98501.

We can be contacted at (360) 352-3627 or by e-mail at mmstables@comcast.net



I gotta get a
Custom-made
Beaded Brow Band!



*Will Customize with your
choice of:
colors, geometric design
and horse's name or barn
name*



**Prices start
at
\$150. 00**

**Lovingly handmade by
Emmy Capizzi and
daughter Beckie**

**To order, call
360-876-5291, e-mail to
jeremmyfarm@msn.com
or see us at
www.burleycreek.com**

Danger in Your Pasture



It's a killer that refuses to die! Almost any part of a Tansy Ragwort plant can produce another Tansy Ragwort plant!

(Continued from page 4)

At the top of the plant are clusters of yellow composite (daisy-like) flowers with yellow ray petals. The flowers are the most toxic part, followed by leaves and stems. Roots are not toxic. The toxins in tansy are pyrrolizidine alkaloids (PAs) that build up over time and cause advanced irreversible damage to the liver. The toxins slowly kill liver cells and prevent them from regenerating. The liver is scarred as damaged tissues are replaced with connective tissue. Milk produced by cows and goats that have eaten tansy can contain PAs, as can honey made from the flowers. (PAs are considered carcinogens and a public health hazard because they are excreted in milk.) There is no treatment for tansy ragwort poisoning as symptoms don't appear until after a build-up of toxins has occurred and the liver is already damaged.

If you'd like more information on toxic plants I recommend the following web-sites:

www.cal.vet.upenn.edu/poison/common.htm#B

www.vet.purdue.edu/depts/addl/toxic/bytox1.htm

www.ansci.cornell.edu/plants/index.html



Whether in the arena or out, a chilly day didn't dampen anyone's enthusiasm! Spectators get up close to check out traditional Peruvian tack. Kathy Parshall in traditional tack and attire on Aurea Maya (left), Karen Arango in English tack on Golosina (center) and Denise Hinkson in western tack on Duquesa del Cielo (right) show that Peruvian Horses are comfortable in any kind of tack.

Breyer Horse Parade at Reber Ranch

Reber Ranch hosted its annual Breyer Horse Parade on November 19, 2005. This was a fun, educational event for kids and families. The weather was chilly but there was no rain to dampen the festivities. Twenty-four breeds of horses presented in the Parade starting with A, the Andalusian, and going to Z, the Zebra. There was a Fjord Horse pulling a cart, a Mini horse, a Curly Horse, Mountain Horses, and Freisians. Linda Maquire, one of last year's Evergreen Show sponsors, wore a traditional Spanish black and red dress and rode her grey Andalusian mare. Beautiful! Kathie Hansen, the NGHC's Event Coordinator rode a Black Forest Draft horse from Germany wearing traditional tack and attire. Kathy Parshall brought her palomino mare in full Peruvian attire and tack which stirred a lot of interest from spectators.

Gaited horses were well represented. Three Rocky Mountain horses, a Tennessee Walking Horse, and three Peruvian horses took part. Everyone had a great time watching all the different breeds parade through the arena. Carrie Olson from Reber Ranch was the announcer and narrated each demo.

Inside the store kids had a chance to race Breyer Horse statues. Refreshments were provided by a local 4-H group. King County Animal Control had dogs, cats, rabbits and Guinea pigs available for adoption and there were several vendor booths as well.

There were lots of spectators and everyone seemed to have a great time!



Donida Farm Schooling Shows



There's always lots of fun at the Donida Schooling Shows!

Above, the 2-gait class line-up shows a great turn out of gaited horses (left). Kathie Hansen shows her gelding Milagro (center) and Julie McAlister gets set for the Champagne class.

Rick Brighton shows off a flashy Spotted Mountain Horse stallion (far left) and Cliff Kinnaman looks great on his Tennessee Walking Horse (left).

The next Donida Schooling Show is March 11th.

Donida Farms has been one of the biggest supporters of the Northwest Gaited Horse Club. The Donida Farms Schooling Show series has proven popular with many NGHC members. The shows offer several classes for our gaited breeds and give riders a chance to practice in a fun and relaxed atmosphere among friends.

If you've never shown your horse and are interested in giving it a try there is one more show in the series. The final schooling show will be Saturday, March 11th. English, Western and traditional tack are all allowed. You can also enter any non-gaited class as well. Open classes are available in the following categories: walk/jog, walk/jog/lope, equitation, halter, showmanship, western as well as English and bareback.

Classes are only \$8 each and stabling is available. You can download a class list and entry form from: www.donidafarm.com/showsandevents.html. Click on English/Western Schooling Show Entry Form.

See you at the show!

Horse Humor

A young cowboy rushed into a saloon yelling, "All right, who's the wise guy that painted my horse yellow?" There was silence in the saloon. "Fess up if you dare," shouted the cowboy.

With that, the biggest, meanest-looking hombre the cowboy had ever seen got up from one of the tables, rested his hands on his gun handles and coolly stated, "I did it. So what do ya want to tell me?"

The cowboy looked up and down at this terrifying figure, swallowed hard and replied, "Just thought you'd like to know, the first coat's dry!"

UPCOMING SHOWS AND EVENTS

Event	Location	Date	Contact
NGHC Annual Meeting (See page 2 of this newsletter for full meeting details)	Amante Pizza & Pasta 4201 Sunset Blvd. NE Renton, WA	Friday February 24, 2006	Northwest Gaited Horse Club (425) 241-7786 or www.nwgaitedhorse.com
The Horse Owner's Guide to Colic <i>Michael Alberts, DVM and Olin K. Balch, DVM</i>	The Bremerton Hotel 5640 Kitsap Way Bremerton, WA 98612	March 4, 2006 2:00 - 4:00 p.m.	
Donida Farm Schooling Show (Last One!) Featuring several classes especially for gaited horses	Donida Farms Equestrian Center 16600 SE 376th Auburn, WA 98029	March 11, 2006	Kathie Hansen (425) 413-1090, paseocaballo@yahoo.com or www.donidafarm.com
Washington State Horsemen CTR Division Spring Meeting	Kitsap Saddle Club 1470 Saddle Club Road Port Orchard, WA	March 12, 2006 5 pm Potluck 6 pm Meeting	Kathy Kennard
Northwest Horse Fair & Expo Clinicians, Stallion Review, shopping	Linn County Fair & Expo Center Albany, OR	March 17-19, 2006	(765) 655-2107 or www.equinepromotions.net/ oregon1.htm
EquiFair 2006 Free Admission!	Josephine Country Fairgrounds Grants Pass, OR	April 8, 2006	www.jcec.org/2006_equifair.htm or (541) 479-4791 or cindy@smartack.com
Oregon Horse Center Mountain Trail Spring Challenge	Oregon Horse Center 90751 Prairie Road Eugene, OR 97402	April 21-23, 2006	www.oregonhorsecenter.com or (541) 689-9700
Pacific Gaited Showcase	Oregon Horse Center 90751 Prairie Road Eugene, OR 97402	May 19 - 21, 2006	www.oregonhorsecenter.com or (541) 689-9700
Ride the West Horse Expo Featuring Josh Lyons, Charles Wilhelm, Eitan Beth-Halachmy, Steve Rother & more	Spokane Fair & Expo Center Spokane, WA	May 19-21, 2006	www.ridethewest.net or (509) 466-9639
Western States Horse Expo Clinicians: John Lyons, Linda Tellington-Jones, Clinton Anderson and more	Cal Expo Fairgrounds Sacramento, CA	June 9-11, 2006	(530) 295-1424, (800) 352-2411 or www.horseexpo.com
Gaitway to Heaven Show Classes for Peruvians, Paso Finos & Mountain Horses	Tacoma Unit Spanaway, WA	June 24 - 25, 2006	karenatbeacon@aol.com
NWPTWH Open Gaited Horse Show Classes for TWH, Mtn. Horses, Fox Trotters. Open Classes for all gaited breeds.	Oregon Horse Center 90751 Prairie Road Eugene, OR 97402	July 8-9, 2006	Penny Thomas (541) 935-5612
Evergreen Gaited Horse Classic Our 5th Annual Show!	Western Washington Fairgrounds Puyallup, WA	July 22-23, 2006	www.nwgaitedhorse.com



Northwest Gaited Horse Club

21105 SE 155 PL
Renton, WA 98059

Phone: (425) 241-7786
Email: info@nwgaitedhorse.com
Web: www.nwgaitedhorse.com

Special Thanks !

Very special Thank-You's to those who contributed to this issue of the newsletter.

Thanks to Kathy Parshall, Kathie Hansen, Kim Brighton, Frances Ceraolo, Penny Miller, Doreen and Jeff Hunter, and Anthony Wilson for contributing pictures and information for this issue of the newsletter!

Your story ideas, pictures and comments for the newsletter are welcomed! Please e-mail stories or pictures to:

Kathy at VikingRidg@msn.com.