

Northwest Gaited Horse Club

Spring Newsletter

VOLUME 3, NUMBER 1 - MAY 2005



NGHC members enjoy a day on the trails at Bridle Trails State Park in November.

MORE CLUB EVENTS IN 2005

The Northwest Gaited Horse Club is the leader in promotion, support, education and activities for naturally gaited horses in the Northwest. Here's a just sample of what the NGHC did in 2004:

- ★ Pacific Gaited Showcase, Eugene, Oregon (Club Booth) - May 2004
- ★ NGHC Show Committee Meeting & General Membership Meeting - May 2004
- ★ NGHC Trail Ride at Watershed Park - June 12, 2004
- ★ Evergreen Gaited Horse Classic Show - July 24-25, 2004
- ★ Club Picnic at Lake Sammamish State Park - August 2004
- ★ Gina Gardner 2-Day Gaited Horse Clinic - September 2004
- ★ Lonnie Kuehn 2-Day Clinic (with special Farrier Clinic) October 2004
- ★ Day after Thanksgiving Trail Ride at Bridle Trails State Park.

Trail rides are one of the best ways to enjoy our gaited horses. The NGHC's trail ride program allows riders to explore the Northwest's State and National Parks, evergreen forests, beautiful beaches and some of the northwest's most scenic public lands. Area trails are rated on a "horseshoe" system

(Continued on page 4)

EVERGREEN GAITED HORSE CLASSIC 2005

The Show Committee for the Fourth Annual Evergreen Gaited Horse Classic is hard at work. Planning for the 2005 show started just after last year's show with the reservation of show dates at the Puyallup Fairgrounds. This year's show will be July 23 and 24, 2005. The Evergreen is once again a FOSH affiliated show, open only to barefoot or flat shod gaited horses. The show committee's first meeting was November 13TH. Discussions centered around what worked and what didn't at last year's show. The November meeting also involved choosing a judge for 2005. A few of the factors that go into choosing a judge are overall knowledge and background with various gaited breeds, judging experience, availability, and judge's fee. Another big consideration in the choice of a judge is exhibitor feedback. Win or lose, show exhibitors who have a good experience, who feel that the judge was knowledgeable and fair, will be willing to show under that same judge again. Overwhelmingly positive feedback from exhibitors led to the selection of this year's judge, Mary Donald of Rupert, Idaho.

The Evergreen Show will have a new Show Secretary this year. Judy Torp has over 25 years of experience running shows ranging from the Quarter Horse Congress to local shows and has been a licensed horseman steward for 13 years. Judy will be handling pre-entries and running the show office. **An important change for exhibitors to note: This year the Show Office will be located in the Announcer's Booth in the Paulhamus Arena.** This change has been made so that any show issues can be addressed immediately, to improve organization and to ensure that the show runs smoothly.

The Evergreen Show will include 8 breed classes each for Icelandics, Mountain Horses, Peruvians, and Ten-

nessee Walkers, 3 classes each for Fox Trotters and Paso Finos, 2 classes for Gaited Morgans, many Open classes for all gaited breeds, a full schedule of schooling classes, plus fun and games classes and the Championship Classes on Sunday. There has been great attendance and enthusiasm at the NGHC's Dressage for Gaited Horses workshops. Many club members have asked to have Dressage added to the show. **For the first time this year the Evergreen Show will include a Dressage Schooling Class!** We are very fortunate to once again have Lori Shepp as our announcer. Lori has done a wonderful job in our past shows ensuring that things run smoothly by keeping exhibitors, spectators and the show volunteers informed. Lori has truly become the "Voice of the Evergreen Show!"

Sponsors and Vendors are another important part of the Evergreen Show. Kathie Hansen has compiled a list of last year's sponsors and potential sponsors for this year. Kathie will be sending out sponsor/vendor packets by mail and maintaining a master list of sponsors. If

(Continued on page 9)

Inside this Issue:

- **Lonnie Kuehn Clinic - page 2**
Full House at Gaited Horse Clinic.
- **Danger in Your Pasture - page 6**
Plants that can kill your horse
- **NEW FEATURE - Member Profile**
Cliff & Cathy Kinnamon pg. 7
- **Breed Profile - page 8**
The Tennessee Walking Horse
- **Events Calendar - page 12**
Upcoming Rides, Shows & Clinics



24 Horse and Rider Pairs and 40 Auditors attended the Northwest Gaited Horse Club's 2-day clinic with Lonnie Kuehn.

Laughing and Learning with Lonnie

2-Day Clinic Packed with Fun and Information

So much information was presented at the Lonnie Kuehn Clinic we thought our readers might enjoy a couple of different viewpoints. The following reviews were written by Kim Brighton and Kathy Johnson.

Whether you were a rider or an auditor at this clinic, the interactivity and quality of information that Lonnie and Stan presented was truly a rewarding experience. We had a diverse group of 24 riders and horses registered in this clinic. There were Tennessee Walking Horses, Mountain Horses, Peruvians, a Paso Fino, Icelandic, and a Missouri Foxtrotter. Rider's levels of ability ranged from beginner to advanced in both English and Western disciplines. All shared the common goal of learning more about their horse's gait and how to improve through proper aids, rider position, tack, and shoeing.

The Donida Farm Equestrian Center and owner Gwen Blake were very accommodating and helped to contribute to this clinic's success. The spacious 100'x200' indoor arena was well lit and horses enjoyed the comfort of Nike footing. Gwen went all out and helped to decorate with straw bales, pumpkins, plantings, trees, etc. Our event coordinator, Kathie Hansen, arrived early on Friday to begin setup, post stall signs, and greet riders. She was joined by Kendall Stuckey, Kim Brighton, Rick Brighton, and Mary Benedict Saturday

morning to finish setup for the clinic. As people arrived for the clinic and got checked in, they could browse through the club displays of complimentary equine retail catalogs, educational gaited horse information, purchase training video tapes by Lonnie Kuehn, or help themselves to hot coffee, tea, and breakfast bars.

The farrier station was setup directly across from the check in area and allowed everyone the chance to watch and ask questions. Dan and Mary Ann Beberman brought their well stocked farrier rig and provided farrier services to Lonnie's farrier, Stan Trimble, and the horses that attended. There were 8 horses that were reshod during the clinic and it was amazing to see how much easier it was for the horse to travel properly. Other farriers that came to participate and learn were John May and Bill Curry. It was great to see the exchange of knowledge and eagerness to continue learning. John even purchased Lonnie's video tapes to study the movements of the horses and became a club member. Stan gave a presentation to auditors and riders regarding the differences in shoeing lateral horses vs. diagonal horses. The focus was based on shoeing the gaited horse for the best health and performance using keg shoes. Lonnie also commented on the effects of natural balance shoeing with the gaited horse by saying "Squaring off the toe takes away the third part of the footfall. The gaited horse needs the heel, foot, and

push or pull off the toe to gait. You are taking away the ability to gait by cutting off the toe." One horse was reshod during the clinic that had squared off toes and was clearly walking and gaiting much freer through the shoulders and hindquarters after seeing our team of farriers.

"Horses & riders were more balanced & all the horses had improved in their gait."

We had 40 auditors who sat in chairs at the center of the arena so they could be up close and ask questions. Propane heaters were providing by Gwen Blake and Elmer Jones to help everyone stay warm. New club member, Bill Buckman, so willingly offered to be our propane expert and helped us keep them lit (smile). The riders were split into two groups and were placed in a morning or afternoon session. This gave the horses an opportunity to rest part of the day and allowed the riders to audit the second half to learn from others riding. At the beginning of the clinic, Lonnie read each rider's goals for the clinic, brought each horse and rider to the middle of the arena to change out tack that would help meet their goals and continued to provide constructive methods on how to best improve for both the horse and the

(Continued on page 3)

rider. Lonnie encouraged the use of a polo wrap as a stretchy tie-down that attached to the cinch and cavesson. This encouraged the horses to learn to round their backs without interference from the rider's hands. As the horse became more balanced in a rounded frame, the rider could then learn how to feel what was right and begin to develop proper balance and aids that didn't interfere and actually helped the horse. This did take a bit of work on the riders part and everyone looked pretty tired on the first day. From the auditors view, improvements in the riders and horses were very noticeable as the clinic progressed. They went from a pace or trot to a stepping pace, rack, flatwalk, or foxtrot. Horses and riders were more balanced and all of the horses had improved in their gait. All the riders deserve a big round of applause for improving so much with their horses! It was especially nice to see the variety of breeds to learn to compare and identify the various gaits. Lonnie was an excellent speaker and kept everyone engaged in learning. We even managed to sweet talk Gwen Blake on Sunday to ride 3 different gaited horses for the first time. She rode a Tennessee Walking Horse, a Peruvian, and a Mountain Horse and was truly amazed at how smooth they were to ride. She had a big smile on her face the majority of the time and commented how different it felt from the trotting horse. Gwen is a U.S.E.T member, U.S.D.F. Bronze, Silver, and Gold Medalist, and competed Grand Prix Dressage nationally and internationally.

We received very positive feedback during and after the clinic. Many complimented that this was the most organized clinic they had attended and our efforts to provide a quality presentation had not gone unnoticed. We even received 4 new club memberships and many had signed up for further information about our upcoming Gaited Horse Dressage Workshops.

A big thank you to our club volunteers for helping to organize and run this clinic: Kathie Hansen, Kendall Stuckey, Mary Benedict, Mary Ann and Dan Beberman, and Kim and Rick Brighton. Special thanks also goes to Dan Beberman for providing his farrier truck, supplies, and services.

When I arrived at the Lonnie Kuehn clinic I was surprised at the number of people who were there. The club did a wonderful job of promoting the clinic in newspapers, magazines and with flyers posted around the state. The Donida facility was very nice. It was clean, convenient and well kept. The arena was bright, with good footing, the decorations were a classy touch, the clinic check-in and club information area was well organized and the atmosphere was friendly and helpful.

After meeting Lonnie Kuehn at the Evergreen Show I was really looking forward to her clinic. She is one of the few judges (including Peruvian judges) who really know Peruvian gait. The mare that I took to the clinic has good gait; she is very smooth and has lots of termino. But traditional Peruvian training puts an emphasis on high head carriage. As a result, she moves with her head high, her back hollow and her hind legs often strung out behind. Lonnie had me bring Celinda into the center of the arena and tie her head down so she would have to round her back and use her hindquarters more. The difference in the feel of her gait was very noticeable. Celinda moved with her rump lower and her back more up and under the saddle than before. Even my position in the saddle changed; I could feel that I was sitting down and back more than before. Celinda's gait wasn't quite as smooth, but it felt more powerful. I

*What was the best part of this clinic?
It was FUN.*

was sure that once Celinda got used to using her muscles the way she should her gait would smooth out. It took some concentration on my part to keep my seat deeper in the saddle ("smiling with the other set of cheeks" as Lonnie put it), to keep my legs firmly against the horse and perform the left-right wiggles of the bit. But the longer I rode, the easier it seemed to get. Now that I know what the correct seat feels like, it will be much easier to know when my horses are properly collected.

On Saturday Lonnie talked about the differences between gaited and non-gaited horses and included a short



Do you ride like a sack of flour? In this humorous demonstration Lonnie shows how a rider's position in the saddle can affect a horse's movements.

background on the gaited breeds. The three true gaited breeds are the Tennessee Walking Horse, the Peruvian and the Icelandic. All other gaited breeds descend from these three breeds. The differences between gaited and non-gaited horses are more than just diagonal versus lateral leg movements. Gaited horses have the entire front leg structure in front of the withers, whereas on a non-gaited horse the front leg is placed directly under the withers. Lonnie refers to gaited horses as "push-pull" horses whose motion is back to front instead of up and down like the non-gaited breeds. With that in mind, all the gaited rider's hand movements should be backward and forward working with the movement of the horse, rather than up and down which works against it. While the non-gaited breeds can walk, trot and canter, gaited horses have many more "gears". There are over a dozen different variations of movement between the walk and the canter in the gaited breeds, i.e., running walk, paso llano, tolt, rack, fox trot, stepping pace, etc.

Many things can impact the way a horse gaits. It was remarkable to see the difference a simple change in bit could make. Lonnie pointed out little things that we often miss, tiny clues that

(Continued on page 4)



Everyone enjoyed Lonnie's clinic! Emmy Capizzi and "Special Ed" (top); the NGHC's intrepid Events Coordinator Kathie Hansen & Milagro (center) and "Yer Killin' me Kendall" Stuckey and Atticus (bottom).

Learning with Lonnie

Continued from page 3

indicated the horse was uncomfortable, unhappy, frustrated, belligerent, or trying to protect itself. On Sunday, Lonnie demonstrated how different bits apply pressure to the horse's head, mouth, nose, poll and chin. Some bits even affect a horse's carriage as far back as the withers, a fact I was unaware of.

As an auditor the conformation part of the clinic was the most interesting. I like to see conformational differences first hand. I think it's important to understand the limits that conformation puts on a horse's ability to do a particular job. Three horses were lined up single file. Each horse had very different angles in the shoulders, the stifles and hocks. Lonnie explained how these differences would affect the way each horse gaited, from the lift in the front legs and the length of the stride, to the amount of overstep.

What was the best part of this clinic? It was FUN. The amount of information Lonnie presented at this clinic was incredible. She talked about shoeing, biting, nutrition, saddle fit and design, worming, and equine dentistry. Lonnie is the rare clinician who actually explains the "why" behind things, why a gaited horse needs a shorter saddle (they have shorter backs), why it may be easier to correct gait moving in one direction of the arena than the other (horses are right or left handed, just like we are and so are stronger on one side than the other). Some clinics I have been to are more geared to selling merchandise than teaching horsemanship. At Lonnie's clinic there were no \$50 "carrot sticks", no racks of "signature apparel", no "magic halters", and no gimmicks. Instead there were a couple dozen track bandages for tie-downs, and some bits and cavesons that we were welcome to use during the clinic; items that Lonnie humorously made clear she wanted back. ("I've got all your names and addresses. I know where you live," she announced.) Lonnie demonstrated again and again that we were all capable of getting better gait and good results with our horses. We just had to learn what to do. Lonnie uses a practical, common sense approach in her clinics that I found really refreshing. And that's way more valuable to me than a \$50 "carrot stick" any day.

Club Events

according to their level of difficulty. This method allows riders to match the trail ride with their level of riding ability, their horse's trail experience, and the amount of time needed to complete the ride. The trail ratings are as follows:

U = Easy - less than 2 hours to complete, little or no incline, no water crossing.

UU = Somewhat easy - 2-3 hours to complete with some incline.

UUU = Moderate - 3-4 hours to complete, incline.

UUUU = Difficult - over 4 hours to complete, water crossing and steep incline.

NGHC Incentives & Awards

As a way to encourage recreational riding and recognize participants who attend more than one trail ride a year, NGHC will present awards to the riders who logged the most trail hours at the end of the year. With the Hourly Log Incentive, NGHC members can earn awards by attending NGHC trail rides or by going on your own trail ride. All gaited horse enthusiasts are welcome to participate; however, you must be a NGHC club member to receive the awards. In January of the next year, awards for most hours ridden will be presented. Riders must complete the log after each trail ride and include: date, number of trail hours, location of trail, name of trail and city, state or province. Then submit logs by December 31 of the current year showing how many hours ridden to qualify.

You can download an hourly trail ride log from the club website at www.nwgaitedhorse.com. While you're there, download a membership application, too. If you haven't done so already, it's time to renew your membership in the Northwest Gaited Horse Club! You don't want to miss out on any of the fun in 2005! Clinics, trail rides, *plus* the quarterly newsletter, our on-line e-group, and discounts on goods and services from our club sponsors make a membership in the NGHC one of the best things you can do for yourself and your gaited horses! Membership is only \$30 a year!



Danger in Your Pasture

Contributed by Kathy Johnson



Yew trees were commonly planted in churchyards; the trees have a close history with ancient religious rites. Yew trees are highly poisonous and produce distinctive red berries as pictured below.



A close-up look at the needles and berries of a Yew tree.



Rhododendron and azalea are common ornamental plants in the Northwest. All parts of these plants are toxic.

The following is an actual posting taken from an Internet message board:

"I had another horse die in the pasture yesterday, this is the third horse in 12 days. We took this horse to OSU Vet Clinic, just like we did the second horse last week... After numerous vets and consultations, two autopsies and much hand wringing and scratching our heads, we had our vet check out the pasture and everything on the property another time. He found a Yew tree in the front yard of the house. About three weeks ago, the people on the property had trimmed all their trees, including the Yew, and put it all in a burn pile in the back of the pasture. The horses didn't eat it at first, but apparently nibbled on it just before they died."

Yew trees contain one of the fastest acting, most deadly poisons in the world. A single mouthful of Yew can kill a horse or cow within 5 minutes. Yew and many other common plants native to the Northwest contain toxins that can be deadly to your horses (and to you too!). This series of newsletter articles will cover some of the most common toxic plants found here in the Northwest. It will include symptoms of poisoning typical of the plant described and treatment, if any is available. *Keep in mind that most horses will not eat things that are not good for them if they have something else to eat instead.*

#1 on the list of toxic plants are **Yew trees** (*Taxus baccata*, *Taxus cuspidate*, *Taxus brevifolia*). Yew trees have had a legendary connection with death and resurrection since ancient times. The name "Yew" has been traced back to the sacred word for God, "Jehovah". Yew was sacred to the ancient Druids and may have been part of their worship rituals. Yew was planted in churchyards because it was thought its branches would draw in the "poisonous vapours" believed to be "dead bodies walking abroad" that were exhaled by graves after sunset. Legend says that Robin Hood's bow was made of yew, hence the species name "Taxus" the Latin word for "bow."

Yew is a woody perennial with flat 1/2 to 1 inch long evergreen needles. The needles are lighter green on the underside and broader than pine needles. Yew grows a red berry that forms a cup around a black seed. Yew is most often planted as an ornamental shrub or as a hedge. **All parts of the plant are exceptionally toxic; so toxic in fact that sudden death is considered a "typical" sign of Yew poisoning!** The powerful toxin in yew is taxine, a mixture of alkaloids that causes death from cardiac and/or respiratory collapse. Interestingly, *taxol* a powerful anti-cancer drug is derived from Yew. The Yew remains toxic even when dry. Hay containing any amount of Yew is *unsafe*. Yew has sometimes been mixed into shavings and horses have died from nibbling on them. *Yew is lethal*. Its poison acts so fast that the victim is usually dead before treatment can even be attempted.

Azalea and Rhododendron (*Rhododendron spp.*) are so common as ornamental shrubs and hedges in the Northwest we may forget they are a threat. All parts of these plants are toxic, especially the leaves and the flower nectar. Rhodies and azaleas contain grayanotoxins (glycosides) that affect the stomach, intestines, and cardiovascular systems. The toxins cause stomach irritation, abdominal pain, abnormal heart rate and rhythm, convulsions, coma, and death. Usually signs develop within 6 hours of ingestion and including salivating, vomiting (in capable species), diarrhea, abdominal pain, and tremors. Treatment consists of detoxification if possible; respiratory support and fluid replacement therapy may be necessary.

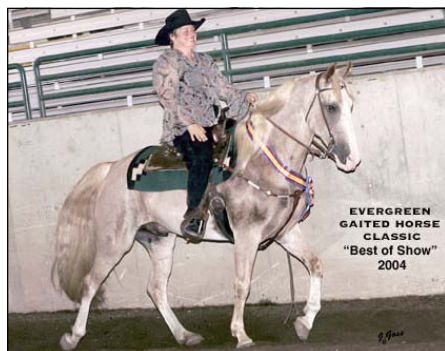


Caution: Honey that comes from the nectar of rhododendron and azalea flowers is also toxic and **should not be eaten**. Honey made from the plants is known as "mad honey" and has been reported to cause cardiac arrhythmias, vomiting, mild paralysis and convulsions in humans.

Next issue: Watch out for "Dead Man's Bells"! More common plants that can harm your horse.

NGHC Member Profile

Cliff and Cathy Kinnamon



Cliff & Cathy Kinnamon happily accept the Best Gaited Horse of Show award won by their Tennessee Walking Horse Rose's Red Rover (above).

With this issue of the newsletter the NGHC starts a new feature, the Member Profile. This column will introduce members of the club and help us to get to know each other better. This issue features Cathy & Cliff Kinnamon of Rochester, Washington. Cathy & Cliff have Tennessee Walking Horses and are the owners of Rose's Red Rover the 2004 Best Gaited Horse of Show at the Evergreen Gaited Horse Classic.

How did you get started in horses?

Cliff got started in horses by riding the neighbor's pony and then at about 13 he was jogging standardbreds to cart. My mom would take me to the fairgrounds to a 4-H show and pay someone a quarter to let me ride their pony.

What brought you to the gaited breed you have now?

A friend of Cliff's had a Tennessee Walker, Cliff rode it, loved it, and that

was the beginning. I had a half Arab and said I would never sell it, and then I rode a walker and I sold my beloved horse and we started buying walkers. We have been buying, selling, and upgrading along the way. Currently we have seven.

What are your favorite horse related activities?

Cliff loves being competitive in the show ring and starting young horses. I love trail riding and entered my first show at the age of forty-five. I always wanted to show and with Cliff's guidance I am having some success.

What do you do for a living? What is your everyday life like?

Lucky Cliff is retired from Weyerhaeuser as a mechanic and instead of grease under his nails now it is just 'horse.' I have been teaching phys ed. at Winslock Elementary school for the last 16 years. I come home to a happy man and a barn full of happy horses. What a deal!

What are your goals as far as your horses are concerned?

Our goals for our horses is to have them be a pleasure to ride and when we show we want people to say, "Where did that horse come from?" Ha!

If you could ride any horse of your choosing anywhere in the world, what horse would you ride, where would you go and what would you do?

My choice of all horses to ride would have to be a Tennessee Walker named, 'Champagne Watchout' owned by Jenny Jackson. When we saw this horse go we said, "Man, where did that horse come from?" I would love to ride him on the coast of Ireland.

Any final thoughts?

The Northwest is fortunate to have such a great horse club that is passionate about the gaited horse and the people who love riding them.

Horse Humor

A man's car stalls on a country road. When he gets out to fix it, a horse in the nearby field comes up along side the fence and leans over by him. "Your trouble is probably in the carburetor," says the horse. Startled, the man jumps back and runs down the road until he meets a farmer. He tells the farmer his story. "Was it a large white horse with a black mark over the right eye?" asks the farmer. "Yes, Yes, Yes," the man replies. "Oh, I wouldn't listen to her," says the farmer, "She doesn't know anything about cars."



A Horseman He's Not:

I realize that the concept of wild horses probably stirs romantic notions in many of you. But this is because you have never met any wild horses in person. In person they are like enormous hooved rats. They amble up to your campsite, and their attitude is "We're wild horses. We're going to eat your food, knock down your tent and poop on your shoes. We're protected by Federal Law, just like Richard Nixon."

~Dave Barry, humorist

The Tennessee Walking Horse

*Contributed by
Mary Ann Beberman,
Lucky Diamond Ranch*



Roger Thomas and his Tennessee Walker Alen's Midnight Starfire make a very pretty picture as they come away with a blue ribbon at the Evergreen Gaited Horse Classic!



The Tennessee Walking Horse is equally at home in western gear as shown in this wonderful presentation by Bill Curry and Harley Tour Glide.

When you mention the name, "Tennessee Walking Horse," the first thing that comes to many people's mind is the frenzied, high-stepping and artificially striding show horses. Along with that image comes the reputation for "soring," bits with 10-inch shanks and a host of training gimmicks used to produce the exaggerated show gaits. In reality, the breed was not created for the show ring, and the REAL Walking Horse is a gentle, friendly and willing animal born with the natural ability to produce smooth, comfortable gaits.

Farmers in the state of Tennessee committed over a century of careful breeding to produce the Tennessee Walking Horse (TWH) of today. They desired a utilitarian horse that could pull the plow, drive the family to church and also stride effortlessly over the hills and valleys of rocky Tennessee. Very selective matings between trotters and pacers, starting with Narragansett and Canadian Pacers, culminated in the "Confederate Pacers" of central Tennessee. The Civil War prompted crossings of the Confederate Pacers with Union Trotters, producing the "Southern Plantation Horse" or "Tennessee Pacer." Next came the blood of the Thoroughbred, Standardbred, Morgan and the American Saddlebred. These breedings resulted in horses that possessed an unusual yet smooth gait that came to be known as the running walk. In 1885, a cross between a stallion named Allendorf, from the Hambletonian line of trotters (Thoroughbred and Saddlebred stock) and Maggie Marshall, a Morgan mare, resulted in Black Allan – the horse later chosen by the Tennessee Walking Horse Breeder's Association (founded in 1935) as the foundation sire of the breed. He was designated Allan F-1 – a cross between Allan F-1 and a Tennessee Pacer helped produce the Walking Horse we have today. 100% of all registered Walking Horses go back to Allan F-1. The TWH studbook was closed in 1947, meaning that from 1948 forward, to be registered as a TWH, both parents must also be registered.

Though the history of the breed is interesting (there are stories of foundation sires being used to pull wagons carry-

ing moonshine!) it's the gait that attracts most people to the breed. The gaits of the TWH are natural and inherited, and can be easily recognized from the time a foal starts to amble alongside its mother. There is rhythmic coordination of legs, head and body movement. The flat walk and the famous unique running walk are both basic, loose, four-cornered gaits with a 1-2-3-4 beat tempo – each foot hitting the ground at separate intervals. As he moves, the horse's head will nod in rhythm with the regular rise and fall of his feet – the head nodding down with the landing of each hind foot. There is a definite overstride – the hoof print of the hind foot will land in front of the corresponding front foot – for some horses, a difference of 18 to 24 inches! The smoothness of the ride comes from 3 feet being on the ground at any one time. The horse should travel in a straight, direct motion, never winging, crossing or swinging. The flat walk should be loose, bold and square with plenty of shoulder motion. The running walk should also be executed with loose ease of movement, pulling with the fore feet, pushing and driving with the hind. There should be a noticeable difference in the rate of speed between the flat walk and the running walk, but a good running walk should never sacrifice form for excessive speed. The third gait, the canter, is a high rolling, collected gallop with distinct head motion, chin tucked and in a smooth, collected movement. Properly executed, it's like sitting in a rocking chair!

TWH come in all shapes and sizes – generally ranging from 15 to 17 hands, and averaging 1000 pounds. They come in all colors, with some breeders striving for flashier coloring – spotted, palomino, champagne and buckskin in particular. Just remember, you can't ride color! Gaits and temperament should come before a flashy paint job! Most TWH have less than perfect legs – at least in the textbook way of thinking. Many have narrow chests, toe in or more often, toe out, and have cow or sickle hocks. You need to remember, however, that TWHs have longer hind legs than other breeds, which they use to give us the gliding, striding motion behind, and the animated, bicycling motion in front. It is harmful to try to correct deviated limbs with shoeing – instead, insist on flat and level feet, then check the pattern of wear on your horse's shoes. We've had extremely toed out horses that track laser straight

EVERGREEN GAITED HORSE CLASSIC 2005

(Continued from page 1)

in their shoes, and their gaits are awesome to ride, and to watch! Desirable conformation traits include a long, graceful neck coming out high from the shoulder, a long sloping shoulder with a free range of motion, a short, strong back and a long, sloping croup. Horses with hips that are taller than their withers are generally not as well-gaited as those with hips that are level or somewhat below the level of their withers. TWHs with "old" bloodlines tend to have larger heads and longer ears, although breeders nowadays are trying for more refinement in these areas.

Although all Walking Horses are born with the "wiring" needed to gait, there are some considerations to keep in mind. There is a range between "trottness" and "paciness" and all horses are born with a tendency towards one or the other. In Tennessee, breeders hoping for "Big Lick" show horses tend to breed for paciness – when they add weighted shoes, these horses tend to "square up" and deliver the flashy, big strided gaits that win in the show ring. Unfortunately, the horses that don't make it in the show ring suddenly become "pleasure horses" and get sold – we now have very "pacey" trail horses and everyone wonders why their Walking Horses won't walk! On the other hand, there are very "trotty" Walking Horses that also won't walk. The key to a smooth, correctly gaited Walking Horse is slow, consistent training and conditioning to develop the muscles and mindset needed for the flat walk and running walk. Most people want to jump on their horse and fly down the trail - and the TWH will happily comply! But it is actually EASIER for a TWH to trot or pace – unless his mind and body have that 4-beat gait "burned in." Owning a correctly gaited TWH involves a commitment of time, patience and consistency if you want to get the best return out of your investment.

Shoeing, tack and riding styles can also affect a Walking Horse's gaits. His feet must be properly balanced to help him keep his cadence – there is no need for fancy shoes, excessive toe length or intricate weight (although weight CAN help break up a trot or pace). The important thing is for the horse to be trimmed and shod according to his unique confirmation and way of going. Tack makes a difference, too. Ill-fitting saddles can restrict the horse's move-

(Continued on page 10)

you would like to sponsor classes or participate in the show as a vendor, or if you know of a possible sponsor or vendor, please contact Kathie at paseocaballo@yahoo.com.

Bigger and Better Awards!

The awards this year are the best ever! The highlight of each Evergreen Show is the Best Gaited Horse of Show Class. A horse must win at least one blue ribbon in a breed class to qualify for the Best Gaited Horse class. The class is exhilarating to ride in and fun to watch with the best of all our wonderful gaited breeds competing against each other. This year we are very excited to announce that the Winner of the Best Gaited Horse of Show will receive a Stubben Gaited Horse Saddle valued at over \$1,800! (Please see article on the facing page). The Reserve Best in Show horse hasn't been forgotten; this exhibitor will receive a Wahl KM-2 Professional 2-speed clipper. The Gymkanha High Point Horse will receive an Oster 11-piece Grooming Kit with carrying case. There are several exciting Championship awards including two incredible hand-beaded brow bands in club colors (green, black, white & gold) donated by Emmy Capizi and a gorgeous hand-made Swarzski crystal browband donated by Linda McGuire of Imperial Farm. In addition we have several \$50 gift certificates, products from Cowboy Magic, Smartpak Equine and Horseman's Dream.

The Evergreen Gaited Horse Classic needs volunteers to help the show run smoothly. Some positions only take a couple of hours of time, others require more time and effort. Here is a list of positions that need volunteers:

RV Parking - Keeps a list of all "campers" and makes sure all vehicles parked in the RV area have paid their fees.

Vendor Coordinator Assistant - works with all vendors at the show grounds to help them set-up in the correct location.

Barn Check-In Committee - Greets exhibitors upon their arrival & helps them locate their stalls, (need crew of 2 in shifts).

Gate Stewards (4) - Alerts riders in the warm-up arena about upcoming classes. Checks rider's numbers at the arena gate to ensure exhibitors are going into the arena for the correct class. Coordinates with the DQP area to help keep the show running on schedule and to oversee the warmup arena.

Ribbon Presenters - Will work in the arena and present ribbons to class winners.

Assistant to the Announcer - Assists the announcer and show secretary.

Show Runners - Brings updated class sheets to gate stewards, judge, and the DQP. Brings class results to the Announcer.

DQP Assistant (2 per day) - One person checks-in exhibitors and documents for DQP. One person answers questions, provides class status and watches the exit gate for exhibitors entering/leaving the warm-up arena.

Trail Class set-up - Assists in the set-up and tear down of the trail class obstacles.

Show set-up - Assists with the set up of the club booth, the DQP area, and gate area into the arena (this work takes place the day before the show).

Breed Demo Coordinator - organizes the Saturday Night Breed Demonstration. Coordinates with the breed reps for the order of breed demo performances. Makes sure the show announcer has individual breed commentaries and music for each breed demo.

Ring Steward - Acts as the liaison between the judge and the exhibitors in the show arena. Notifies the judge when all horses are present for each class. Must be familiar with show rules and ring etiquette.

If you'd like to "get your feet wet" and find out what the Evergreen Gaited Horse Classic is all about, give volunteering a try. You'll get a close-up view of the events and a nifty new T-shirt to boot! Contact volunteer coordinator Deborah Curtis at debracurtis7@aol.com or Show Manager Debbie Gregory at (206) 546-4138.



The Best Yet for the Evergreen's "Best in Show"



The 2005 Best Gaited Horse of Show at the Evergreen Gaited Horse Classic will receive a Stübben Gaited Pleasure Saddle donated by Noble Horse Saddlery.

Stübben, the world's largest hand-made saddle maker, recently expanded their line to include specialized saddles for the gaited horse breeds. More specifically, the Gaited Pleasure and Icelandic Saddles are getting overwhelming response in Europe, and well on their way to stardom here in North America.

The Stübben saddle is a specialized item of sporting equipment and it has the complex job of uniting horse and rider - no easy task if you consider their very different anatomies. The experience and skill of craftsmen, perfected over generations and perfected into an art, ensure that both horse and rider are fitted flawlessly. It is important that the saddle does not interfere with the natural movement of the horse, a point exceedingly important with the movement of gaited horses in particular.

What sets Stübben apart from all others is their patented spring tree. The Stübben spring tree is the "made to measure" link between the horse and the rider. When a rider sits in a Stübben spring tree saddle, the webbing absorbs the rider's weight while the steel springs counteract both the pommel's and cantle's tendency to rise away from the horse's back. These counteractions provide the most comfortable seat for the rider. Additionally, the Stübben tree is fitted with a front arch made from a

specially strengthened steel which both protects the withers from injury and keeps the saddle in the correct position behind the horse's shoulders.

Quality, long-life, and exceptional craftsmanship are the standards for any Stübben product. Various parts of a Stübben saddle are still hand-stitched, such as the seat, the panel and the billets. More than 100 individual steps are necessary in the manufacture of a Stübben saddle; artistry is always realized by the craftsman, and the work carries the signature of the maker and therefore is unique.

The Icelandic series of saddles was developed in partnership with Icelandic Master Trainer, Benedikt G. Lindal, known as Benni. Benni is one of only 4 riding instructors in Iceland with a class A Riding Instructor qualification and the master trainer certificate of the Trainer's Association of Iceland. This combination of Stübben manufacturing and the Benni Lindal expertise has produced a range of tailored saddles made for the exact requirements of flat work for dressage and the specific gaits of tölt and flying pace. The saddle shape and balanced seat places the rider in the optimum position to allow complete freedom of movement for whatever gait is required, and on the sports saddle designs the long panel, for which a patent application has been filed, ensures better weight distribution.

The Stübben Gaited Pleasure saddle has a custom padded saddle flap that is designed to give support to the rider's leg and the horse's movement respectively, which results in an especially comfortable feel in the saddle. These saddles are built on a modified tree tensioned to better the position of the gaited rider and allow the optimum freedom of movement for the gaited horse.

Since 1894 Stübben has been offering the discriminating horseman a quality, time-honored product and the introduction of these specialty gaited saddles is no exception. A Horse. A Rider. Stübben.

The Tennessee Walking Horse

(Continued from page 9)

ment, which originates in the hind end. Saddles that restrict shoulder movement or hip motion will soon shut down a horse's effort to boldly stride out – like what happens when you step down on the middle of a hose. Instead of flowing fluidly, the energy comes out in fits and starts, or stops altogether! Bits don't need to be harsh, but the horse DOES need support in order to gait properly. Loose, swinging reins are fine if all you want to do is mosey down the trail, but in order to gait properly, the horse must be collected and gathered under himself. You need to harness the energy between his hind end and his front end, and you do that by supporting him with bit and reins. You don't need to "hang on to his mouth" but you are doing no service to your TWH (or ANY gaited horse!) by riding him with his back hollowed, neck concave and nose sticking up in the air. This posture results in trotting or pacing, and can actually cause harm to your Walking Horse's joints, back and legs over time. If you are unsure of what your Walking Horse is doing as you ride, a consultation from a knowledgeable Walking Horse person is well worth the time and expense involved.

TWHs are a "can do" breed and do just about anything the other breeds are capable of. We have a client who has won State finalist awards in 4-H and Junior Rodeo – games, performance and even team roping, on his THW gelding! The breed association has a Versatility Program that showcases the wide range of capabilities of the TWH: halter, harness, English & Western pleasure, jumping and gymkhana events. Walkers have also been traditionally represented in endurance competitions and competitive trail rides. But where the TWH REALLY shines is out on the trail – there's nothing like basking in the attention as your horse flies down the trail, smoothly and confidently, while you ride without a hair out of place. Thanks to the farmers of bluegrass Tennessee, we have a truly special, American born and bred equine athlete.



Gaited Dressage Workshop Participants are Letter Perfect!

Breaking the Barriers!

Dressage is one of the world's most popular equine activities. Up until now dressage has been dominated almost exclusively by the trotting breeds. But that is changing thanks to progressive groups like the Northwest Gaited Horse Club. The Evergreen Gaited Horse Classic is the FIRST show in the Northwest (maybe the first show in the nation) to offer an Introductory Level Dressage Test for gaited horses! Many of the horses and riders who participated at the Gaited Dressage Basics workshops are expected to enter.

The dressage tests will take place right after lunch on Sunday. The test description will be available at the show office and from www.nwgaitedhorse.com.

The first of three workshops took place on February 26 at Donida Farm Equestrian Center in Auburn, WA. Participants all scored 10s with Erin Jorgensen! All breeds of gaited horses are welcome and many breeds participated; Peruvian Paso, Icelandic, Mountain Horses and Tennessee Walkers.

A total of 9 horses, 10 riders and many auditors participated in the first workshop. Erin's incredible energy and sense of humor made for a fun and educational day. The day started with a beautiful dressage demonstration by one of Gwen Blake's horses Jowell, ridden by Lily and narrated by Erin.

Participants went home with an understanding of the meaning of dressage, the movements performed in dressage and how to improve their own horses' balance, strength and suppleness while enhancing his natural ability and gaits.

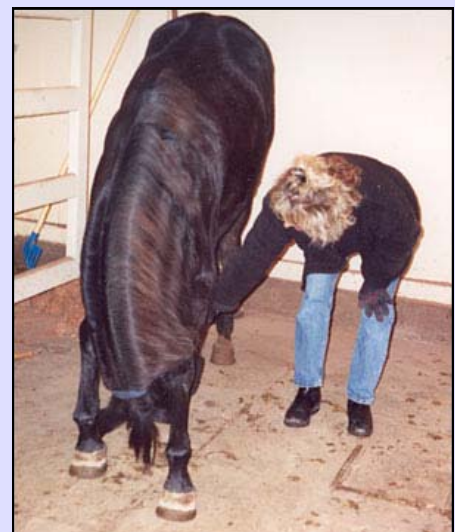


Erin Jorgensen instructs Emmy Capizzi while her Mountain Horse "Special Ed" listens in.

Fun Stuff From Our Members



It's spring for sure! This little guy gaits up a storm! His name is Dusty's Buckwheat Pete. His mother, Lazer Doll, is a Quarter Horse mare, and his father, who passed along all that wonderful gait, is the palomino gaited Morgan stallion KRK Gold Dust owned by Deb Johnson.



The very talented Peruvian gelding Milagro del Cielo takes a bow for the camera! Milago has learned several neat tricks, this terrific bow among them. His teacher and partner is Kathie Hansen, the NGHC's Event Coordinator.



Meant for Each Other

Northwest Gaited Horse Club

Once in a while a story comes along that just makes you feel GOOD. This is one such story:

Meet Copper and his new rider/owner, Jaemi. Copper is a Tennessee Walking Horse (Mary Ann and Dan Beberman call him their "miracle horse"). Copper suffered from severe lameness and was either going to be put down or sold at auction. Dan "adopted" him and after a year, brought him back to good, happy health.

Jaemi has cerebral palsy and was about to become wheelchair-bound due to muscle atrophy from the disease. Her family adopted Copper, and riding him is helping to restore her strength and agility.

Just look at them now ! Separately, these two seemed destined to a life of pain and inactivity; together they are flourishing!



*I saw a child who couldn't walk,
Sit on a horse and laugh and talk...*

*I saw a child who could only
crawl,*

Mount a horse and sit up Tall...

*I saw a child born into strife,
Take up and hold the reins of
life...*

*And that same child was heard to
say,*

*"Thank you God for showing me
the way."*

-JOHN ANTHONY DAVIS



Thanks to Mary Ann and Dan Beberman for sharing Jaemi & Copper's story and pictures with us.

Upcoming Shows and Events for Gaited Horses

Event	Location	Date	Contact
Central Oregon All Gaits Schooling Show <i>Judge: Tim Wigren, Ridgefield, WA</i>	Alpenridge Equestrian Farms 60371 Arnold Market Loop Bend, OR	June 4	Judi Tolboe, judi@coinet.com or Annie Kiesow, DJJRBend@aol.com
Brenda Imus "Gaits of Gold" Clinic <i>(Auditors only)</i>	Northwest Equestrian Center Boring, OR	June 17-19	Jamie 1-888-617-8009 or Debby Radakovich, caddis@easystreet.com or call (503) 699-0300
Gaitway to Heaven Show <i>Classes for Peruvians, Paso Finos & Mtn. Horses</i> <i>Judges: Cheryl Aldrich & Ed Smith</i>	Tacoma Unit Spanaway, WA	June 25-26	Karen Arango (425) 226-8460
B.C. IHA Icelandic Horse Sport Competition	Fitjamyri Farm Vernon, B.C.	July 1-3	Arnold (250) 503-0614 or afaber@telus.net
Summer Spectacular <i>Tennessee Walker & Mtn. Horse Show</i>	Oregon Horse Center 90751 Prairie RD Eugene, Oregon 97402	July 9-10	Mary Sjogren (503) 843-7173
4th Annual Evergreen Gaited Horse Classic <i>Judge: Mary Donald</i>	Western Washington Fairgrounds Puyallup, WA	July 23-24	www.nwgaitedhorse.com or call (425) 241-7786
Connected Riding for Gaited Horses with Diane Sept Sutton	Silverton, OR (east of Salem)	Aug. 11-14	Lisanne (503) 838-2500 or www.bridgecreekranch.com/learn.php
Oregon State Fair Horse Show <i>Paso Fino, Peruvian & Tennessee Walker</i>	Oregon State Fair & Expo Center Salem, Oregon	Sept. 23-24	Austin Van Wyck (623) 810-9303 or ShowBoss1@earthlink.net



NORTHWEST GAITED HORSE CLUB

21105 SE 155 PL
Renton, WA 98059

Phone: (425) 241-7786
Email: info@nwgaitedhorse.com
Egroup: nwgaitedhorse@yahoo.com
Web: www.nwgaitedhorse.com

Special Thanks to Contributors

Very special Thank-You's go out to those who contributed their help with this issue. Kim Brighton took all the wonderful pictures of the Lonnie Kuehn Clinic and the Gaited Dressage Clinic, Kathie Hansen wrote the article on the Gaited Dressage Clinic (and also organized the clinic!) and Mary Anne Beberman provided the breed profile of the Tennessee Walking Horse and the wonderful story about Copper and Jaemi. This issue is the BEST yet because of their contributions!

Your story ideas, pictures and comments are welcome. We encourage input from members of the Northwest Gaited Horse Club! Please send stories or pictures to:

Kathy Johnson
6309 174th Avenue KPS
Longbranch, WA 98351

You can also e-mail them to Kathy at VikingRidg@msn.com.

Look for the next issue of the newsletter in late June/early July. Until then,

ENJOY YOUR HORSES!